

# Fabric and colour forecast

CONCEPT, DESIGN AND STYLING: SOPHIE ROET

PHOTOGRAPHER: ANDRA NELKI

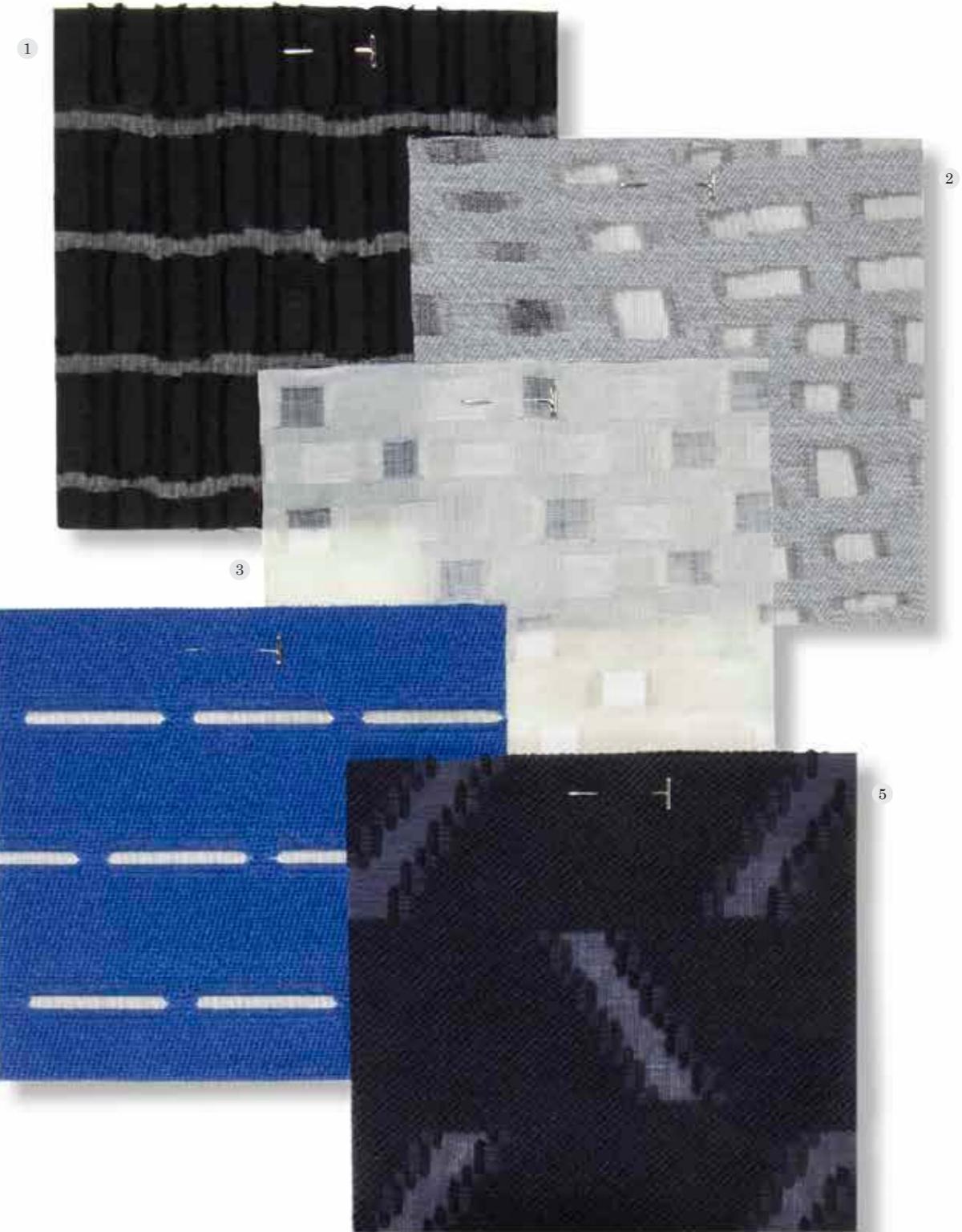
ANTIQUE TYPEWRITER: VANILLA BLACK – COFFEE & BOOKS

ANTIQUE BOX OF PEN NIBS: ANDREW COLLIER ANTIQUES

**letter**, *let'er*, *n.* a mark expressing a sound:  
a written or printed message: a printing type

As we spend so much time typing on computers and texting on smart phones, we are forgetting both the art and the importance of writing by hand. The traditions of writing with pen and ink, printing with wood letter and typing on an original typewriter have all become a thing of the past as these processes take time and irregularities occur. However, these 'imperfections' give texts a personal, unique quality. A formal letterhead elevates the importance of a document and the ritual of securing a letter with a wax seal enhances the preciousness of the letter itself. Woven fabrics for A/W 17/18 will capture these exquisite aspects through the creation of subtle irregularities in patterning and intricately textured surfaces achieved through new yarn combinations, contemporary jacquard structures and innovative finishing processes.



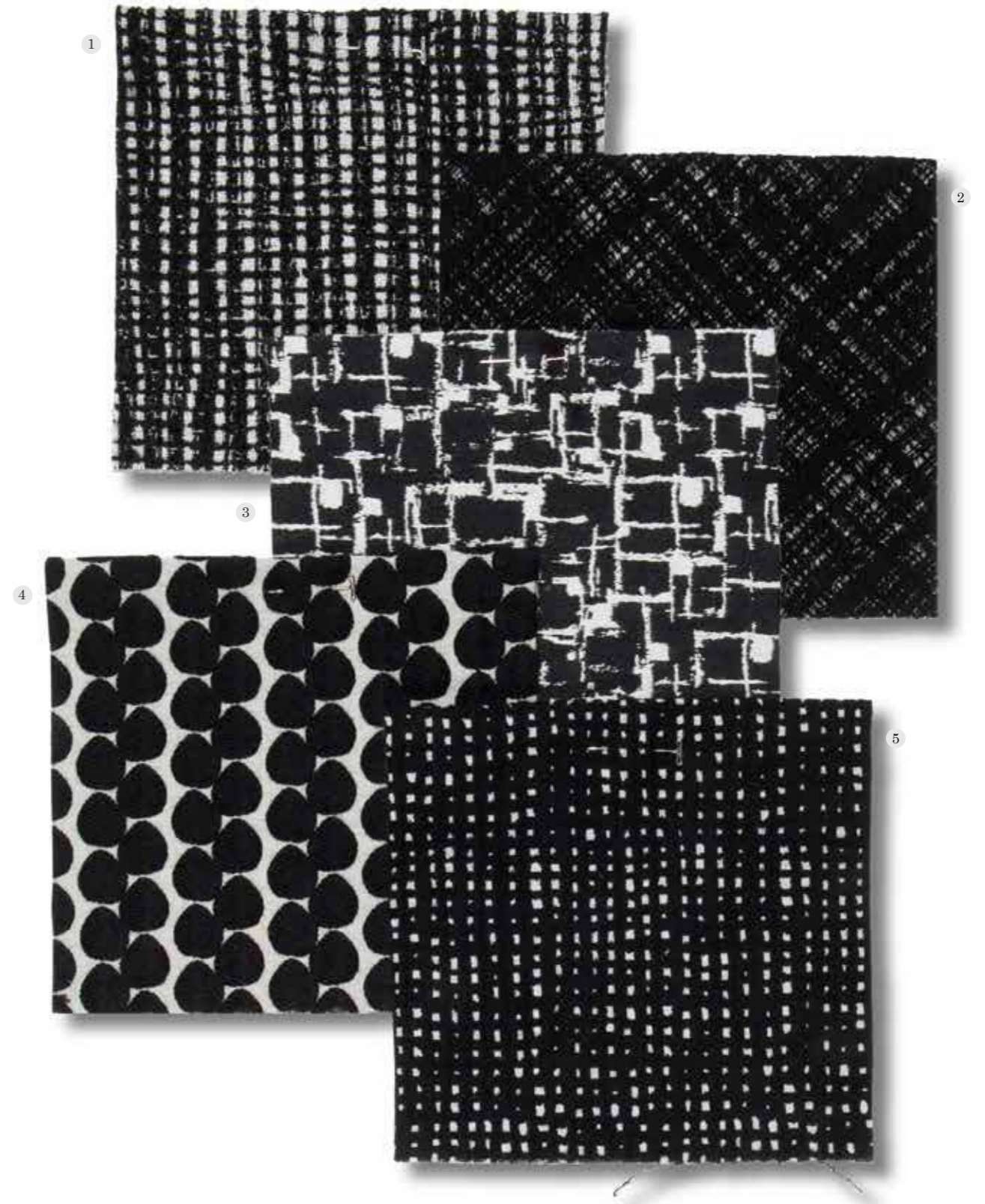


DYNAMIC AND TRANSPARENT

*Cut threads and devoré techniques will be employed to create bold and graphic, sheer patterns in opaque woollen qualities. A sombre colour range of ink blue, black and greys will be lifted with the addition of a shade of aerodynamic blue!*

1. EFFEPIERRE SPA (I) 2, 4 & 5. CUCCIRELLI (I) 3. GIRANI SRL (I)





MID-CENTURY MODERN

*Ordered and playful black and white graphic patterns in wool blends will resemble furnishing fabrics from the 1950s. Natural stretch, arrived at through high twist wools and complex weave structures or the addition of a small percentage of elastane, will give these fabrics added versatility.*

1, 2, 4 & 5. CUCCIRELLI (I) 3. GIRANI (I)





SKETCHED PATTERNS

*Subtle 'hand-drawn' patterns and blurred or speckled effects will enrich these elegant fine wool and cashmere qualities with a delicate, decorative dimension.*

1. 'COTO BY STYLEM' (UP) 2, 3 & 5. LANIFIICO FLLI. CERRUTI (I) 4. INSETA (I)





NEW HERITAGE

*Contemporary tweeds in delightful colours will have the appearance of classic heritage looks; however, they will be lightweight and, due to their composition of wool, mohair and linen, they will surprise by being both soft and crisp to the touch.*

ALL FABRICS: LYRIA (I)



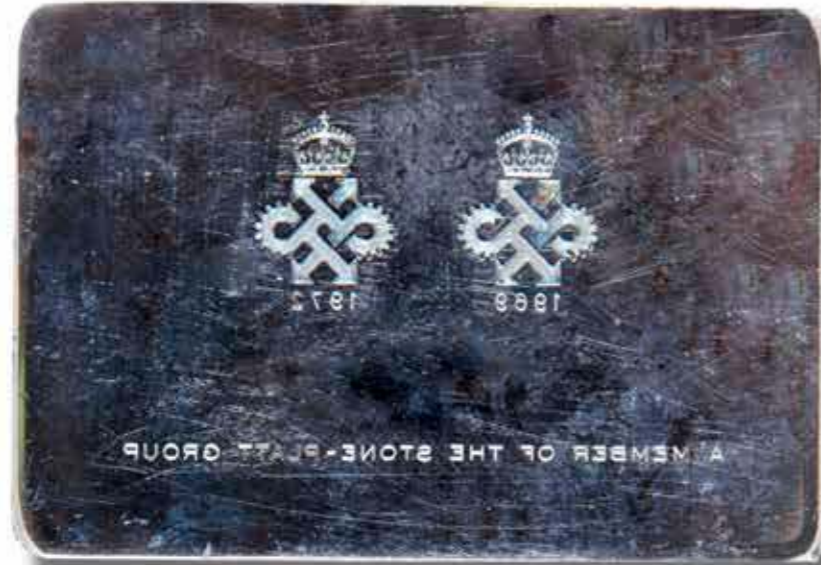


EMBOSSSED AND ELEGANT

*Monochrome jacquard structures in wool, silk and polyamide will create irregular, undulating textures echoing the rippled surfaces of antique wax seals.*

1. TEAM IWANAKA (JP) 2. & 5. EFFEPIERRE SPA (I) 3. RATTI (I) 4. GIRANI SRL (I)





### MARK OF DISTINCTION

*Elaborately textured jacquard patterns with wool bouclé yarns, silk and metallic threads, will create opulent, embellished-looking designs. Dark, saturated colours with accents of metal will enhance the sophisticated appearance of these designs.*

1 & 4. EFFEPierre SPA (I) 2. GIRANI SRL (I) 3 & 5. INSETA (I)